







- HOME
- ACCESSIBILITY
- SUBSCRIPTIONS
- ABOUT US
- CONTACT US
- CREDITS

Home

- NEWS
- TRAFFIC / ROAD CONDITIONS
- PUBLIC TRANSPORTATION
- PUBLIC HEALTH
- PUBLIC SAFETY
- NATURAL HAZARDS
- BE PREPARED
- GOVLINK
- NETWORK AGENCIES
- AGENCY LOGIN

Breaking News for Citizens in King, Pierce and Snohomish Counties

Be in touch. Stay in touch.

The Regional Public Information Network is your one-stop resource for news alerts from more than 75 government, transportation, utility, health and emergency response agencies serving citizens in King, Pierce and Snohomish counties.

RPIN keeps the public informed about street and highway closures, weather, major transit disruptions, and provides updates on what agencies are doing to respond to emergencies and incidents. The public also can sign up to receive e-mail alerts and pager headlines from RPIN partners and get helpful tips to prepare for emergencies.

 **Get Advance Warning. Subscribe to RPIN.**
We'll e-mail you the latest information and alerts as soon as news breaks. Sign up today >

Breaking News and Alerts

View by news source

--ALL--

West Nile virus detected in a bird in King County

KING COUNTY, WA - A dead crow found in Seattle's Laurelhurst neighborhood on August 24th is positive for West Nile virus. This is the first West Nile ...
Public Health - Seattle & King County. Release Date: 9/8/2009 1:08:00 PM

Download Family Emergency Contact Card



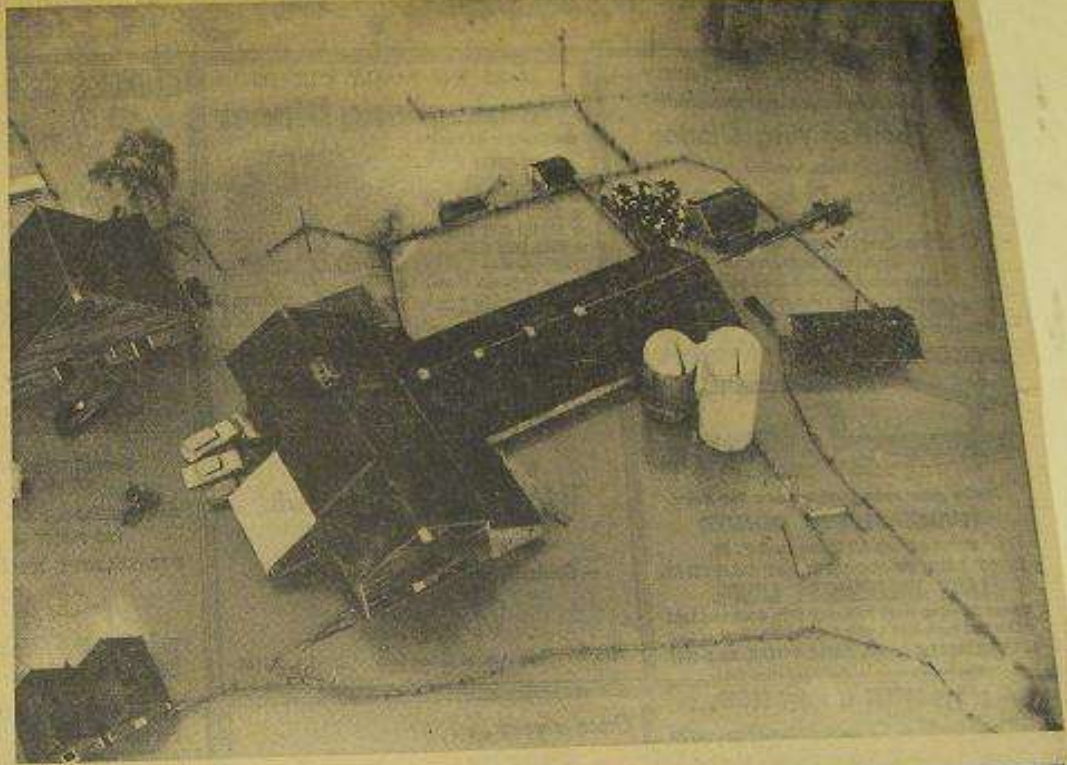
Today's Weather

FLOOD WATERS STRAND FAMILIES AND ANIMALS



DRY AGAIN: Mr. and Mrs. Bill Zarger stood with their children after the family and its dog, Smokey, were evacuated from the Zargers' home in the Fall City area

yesterday, flooded by the Snoqualmie River. The children were, from left, Dennis, 3; Randy, 4, and Rose and David, both 6.



MAROONED: Dairy cows huddled in a barnyard at a farm just off the East Valley Highway south of Kent yesterday afternoon as flood waters from the Green River covered the area. Note the cars and a tractor standing in the waters beside the barn.





Property of White River Valley Museum, Auburn



91-231A7



Property of White River Valley Museum, Auburn



Contact Information:

Robin.friedman@kingcounty.gov

(206) 296-3830

www.kingcounty.gov/floodplans

www.rpin.org